

Description of the program

imc_Dev_Fix_2013_01_01_015197.exe

On 01/01/2013 a firmware problem was detected in imc DEVICES imc STUDIO-based measurement systems.

The problem affects the initialization process of a measurement and causes the posting of an error message due to incorrect interpretation of the time. This prevents the measurement system from performing any further measurements.

With a few exceptions, the problem affects all systems working with the software versions imc DEVICES and imc STUDIO. **Not affected:** all devices of the types imc MUSYCS and imc μ -MUSYCS, older models of imc BUSDAQ (serial numbers: 09xxxx), imc SPARTAN-L and imc SPARTAN-S (serial numbers: 09xxxx), imc CRONOS (PC-Version) as well as ANDIS III.

1.1 Remedy

A remedy of the operating software and the firmware of imc systems is available as the program **imc_Dev_Fix_2013_01_01_015197.exe**. This program can be downloaded from imc's website under www.imc-berlin.com/015197.

Additionally, versions of the software imc DEVICES 2.6, 2.7 2.8 as well as of imc STUDIO 3.0 and 4.0 have been made available in our website's Download area.

The program **imc_Dev_Fix_2013_01_01_015197.exe** enables:

- 1) **correction of the firmware in the imc devices.** This step is mandatory for fixing and restoring the operational capabilities of the device.

By correcting the firmware in accordance with (1) the installation of the software on the computer itself is not changed, but a measuring operation of these devices is now possible. However, after a new firmware update a device would show the error again. To prevent this, we also recommend the step (2).

- 2) **correction of the relevant firmware file** belonging to the imc DEVICES/imc STUDIO software on the operating computer. For measurement operation of the fixed device, this step is not necessary, but strongly recommended.

Note: If you **only** fix the firmware files on the PC (just step 2), then a firmware-update is **not** initiated upon the next preparation procedure! In this case, the firmware within the device will not automatically be fixed and the measurement still cannot be started.

If you install any operating software for imc devices in the future, we strongly recommend downloading one of the available versions, mentioned above.

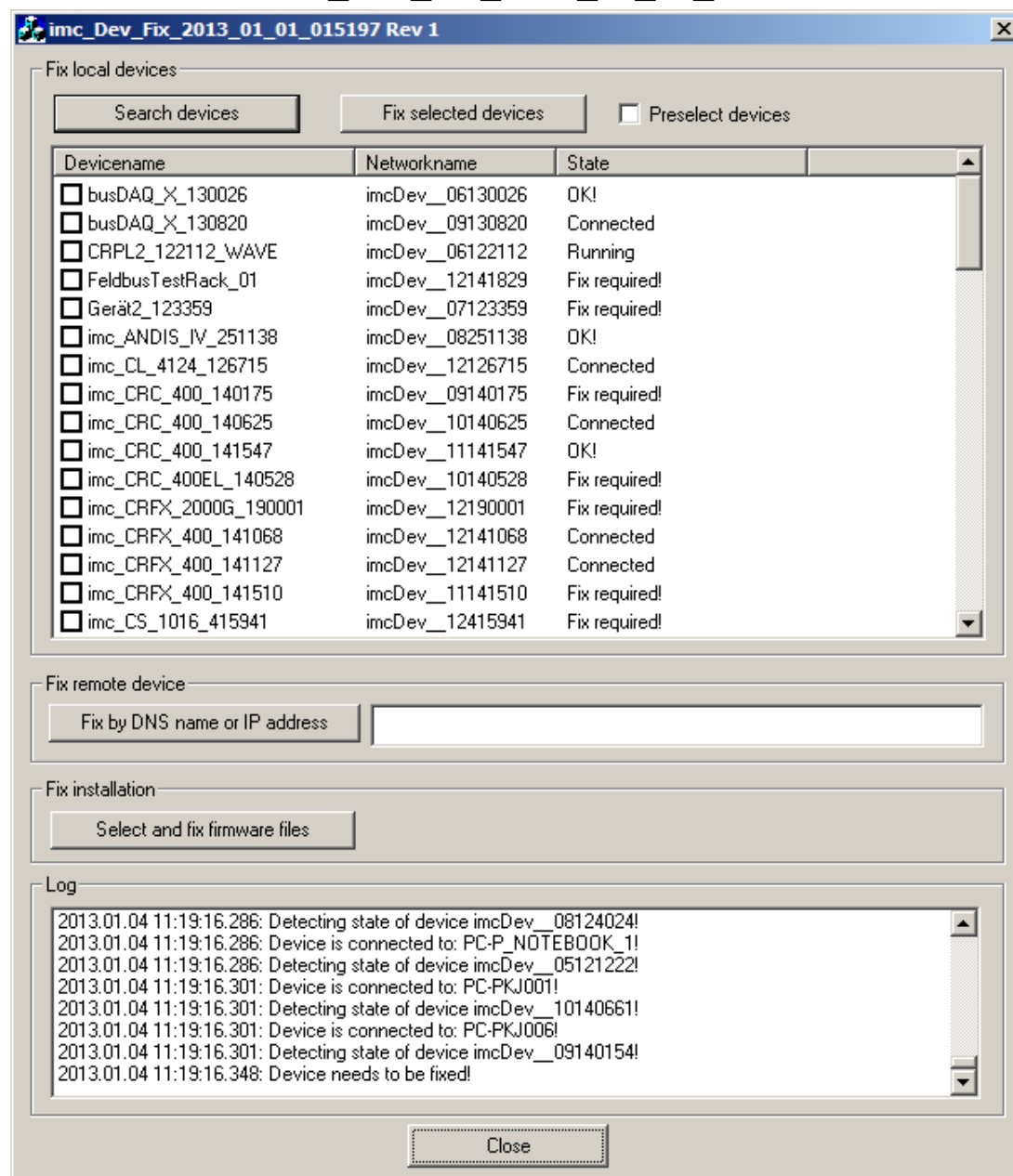
Patch for 2013-015197

1.2 Installation

The program does not need any installation routine. Unzip the file ***imc_Dev_Fix_2013_01_01_015197.zip*** and copy the program to a folder on your computer.

Start the program ***imc_Dev_Fix_2013_01_01_015197.exe***.

1.3 How to run imc_Dev_Fix_2013_01_01_015197.exe



Patch for 2013-015197

1.3.1 Correcting the firmware in the device (mandatory)

1. The imc device must be activated and accessible via Ethernet.
2. Via either of the operating software packages imc DEVICES or imc STUDIO, **no** computer may be connected with the device.
3. No measurement may be running, not even by means of self-start. In this case, the device is listed in the program, but is not available for selection. If the device is selected by its IP Address or its DNS Name, then it is possible to stop the running measurement.
4. imc BUSDAQ type devices may not run in sleep-mode or "Wake On CAN". Therefore, if the CONTROL plug is wired for sleep-mode, unplug it. If it is not possible for you to remove the wiring of the CONTROL plug, it is **absolutely** necessary, that the device does **not** go into sleep-mode during the procedure.
 - a. If the sleep-mode is controlled via a control signal, e.g., the ignition of a vehicle, make sure that the device is kept active with the corresponding signal.
 - b. If you are using "Wake-On-CAN", at least one of the corresponding CAN nodes must recognize activity on the CAN-bus for the duration of the running program.
5. Start the program `imc_Dev_Fix_2013_01_01_015197.exe`

1.3.1.1 Correcting devices which are accessible directly via network

1. Select the button "*Search devices*" in the section "*Fix local devices*". The program lists all accessible devices and indicates in the *Status* column whether a correction is required.
2. Select the desired devices. Only devices having the status "*Fix required!*" are available for selection. The selection can be configured from the program with the option "*Preselect devices*".
3. Click on the button "*Fix selected devices*". The correction will then be performed within a few seconds per device.
4. After the correction, the status will be refreshed in the list and the device is deselected automatically. Check the status as well as the messages in the log window

Patch for 2013-015197

1.3.1.2 Correcting devices which are connected via a router

1. Enter their TCP/IP address or DNS name in the section "*Fix remote device*" and click on the button "*Fix by DNS name or IP address*".
2. Should the selected device be measuring, you can stop the measurement. If an existing self-start cannot be automatically restarted, then a corresponding message will appear.
3. If a device is configured for self-start, then it can be automatically restarted after a successful correction of the firmware, if the following requirements are fulfilled:
 - a. Serial number of the device is 12xxxx or larger, produced after summer 2003
 - b. Firmware version of the device:
 - i. Serial numbers 13xxxx or larger:
imc DEVICES version 2.6 R3 SP5 from 10.20.2007 or newer
 - ii. Serial numbers 12xxxx, produced after summer 2003:
imc DEVICES version 2.7R2 or newer
 - c. The device must have a storage medium with at least 64 KB of free storage space.
4. To check the results, pay attention to the message boxes and the information in the log window.

1.3.2 Correcting the software on the PC

- 1) Start the program and select the button "*Select and fix firmware files*" in the section "*Fix installation*".
- 2) Navigate to the pre-selected file *Umc54prg.UMB*. This is located in the operating software's folder, e.g. C:\Program Files (x86)\imc\imc_DEVICES_2.8R3\Firmware.
- 3) Select this file.
- 4) In case there are additional versions of the imc operating software installed on the PC, carry out the same procedures for all installations.

Notice: Depending on your operating system and the installation path of the software, you may be required to have Windows Administrator rights to correct the software on the PC. Should the access rights for the files be missing, then a message will appear. Also, pay attention to the outputs in the log window of the program to check whether the correction was successful. If the correction was not successful, repeat the above steps with administrator rights, to ensure that during future firmware updates, the faulty firmware will not once again be installed on your device.

In case of problems or questions, our customer service will be happy to help:

Germany:

imc Meßsysteme GmbH

Phone: 030 / 46 70 90 - 26

Fax: 030 / 4 63 15 76

WWW: www.imc-berlin.de

E-Mail: hotline@imc-berlin.de

For our international partners see www.imc-berlin.com and click to **International Distributors**